

DESCRIPTION	REVISIONS	DATE

JIM W. DAY, JR. AND  
HEATHER L. DAY  
WARRANTY DEED  
BOOK 736 PAGE 169

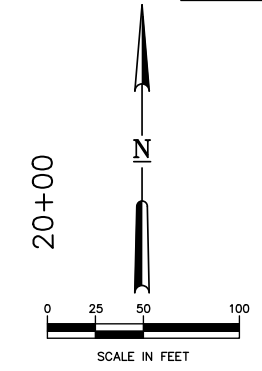
SW/4 SECTION 21 SE/4 SECTION 21  
T-21-N, R-5-E T-21-N, R-5-E

**CAUTION**  
UNDERGROUND  
TELEPHONE AT&T  
(405)-348-1844

PHILIP L. GRIESEL AND KERRY NANCY  
GRIESEL AS CO-TRUSTEES OF THE  
PHILIP L. GRIESEL AND KERRY NANCY  
GRIESEL RECOVERABLE LIVING TRUST  
DATED THE 19TH DAY OF MARCH 2013  
BOOK 727 PAGE 28

**CONTROL POINT**  
CP-102  
FND. 60D NAIL  
N=466563.717  
E=2330043.806  
Z=910.61

**CONTROL POINT**  
CP-105  
FBS, 1/2" IPS  
N=466562.703  
E=2330661.916  
Z=911.29



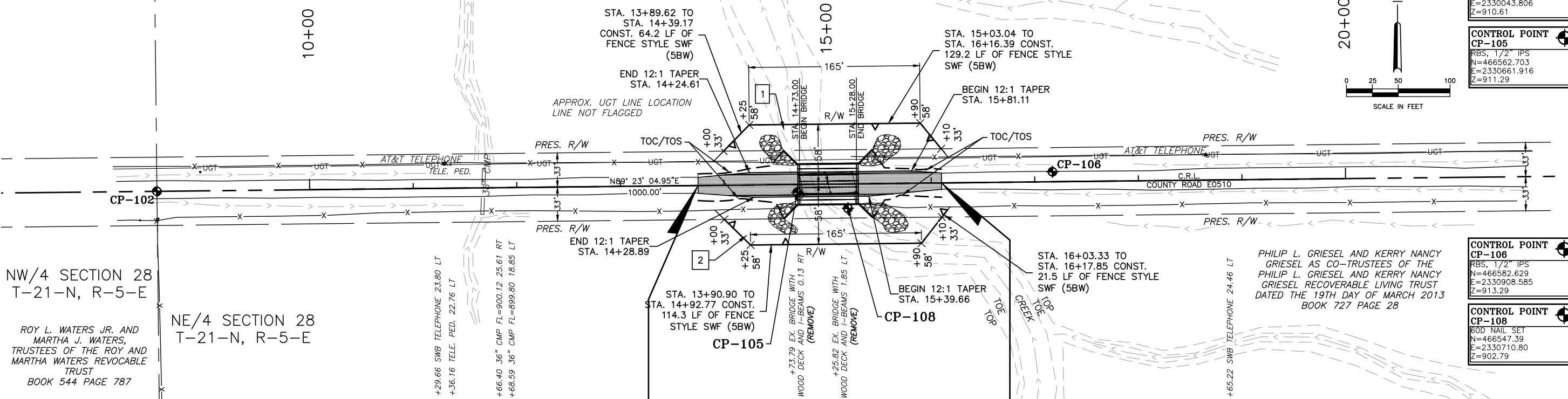
NW/4 SECTION 28  
T-21-N, R-5-E

ROY L. WATERS JR. AND  
MARTHA J. WATERS,  
TRUSTEES OF THE ROY AND  
MARTHA WATERS REVOCABLE  
TRUST  
BOOK 544 PAGE 787

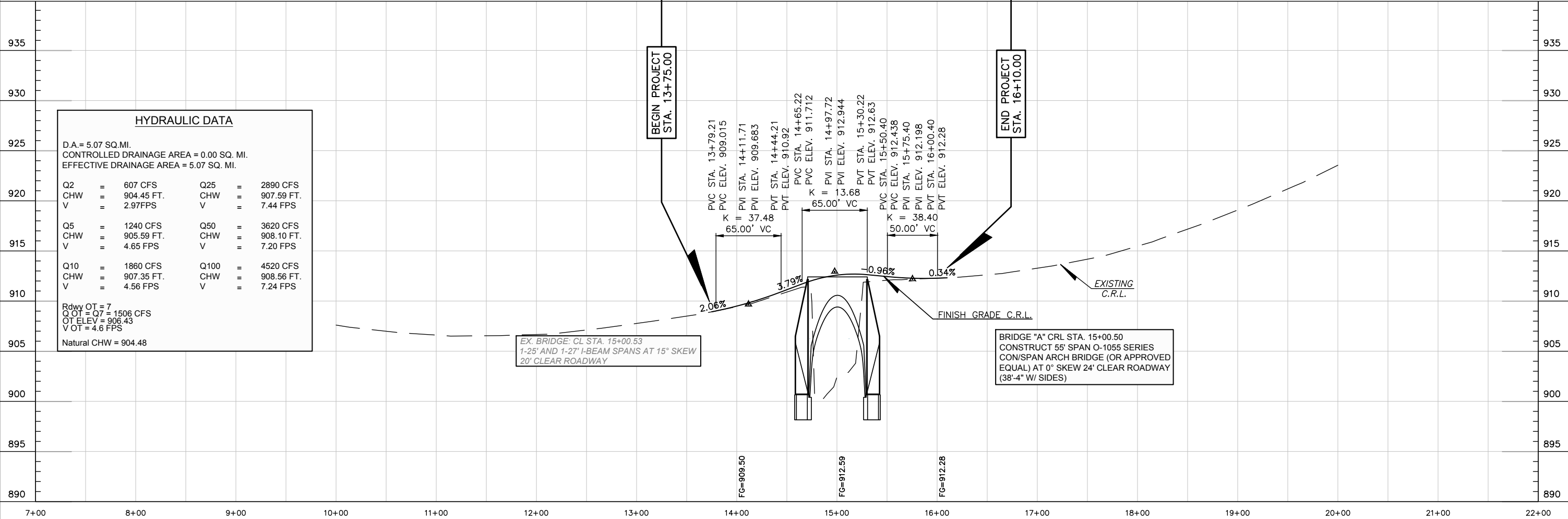
NE/4 SECTION 28  
T-21-N, R-5-E

**CONTROL POINT**  
CP-106  
FBS, 1/2" IPS  
N=466582.629  
E=2330908.585  
Z=913.29

**CONTROL POINT**  
CP-108  
60D NAIL SET  
N=466547.39  
E=2330710.80  
Z=902.79



M:\COUNTY\_PAWNEE\13PAW03\_County\_Bridge\_089\DESIGN\DRAWINGS\13PAW03\_PLAN\_AND\_PROFILE.DWG



**HYDRAULIC DATA**

D.A = 5.07 SQ. MI.  
CONTROLLED DRAINAGE AREA = 0.00 SQ. MI.  
EFFECTIVE DRAINAGE AREA = 5.07 SQ. MI.

Q2 = 607 CFS	Q25 = 2890 CFS
CHW = 904.45 FT.	CHW = 907.59 FT.
V = 2.97 FPS	V = 7.44 FPS
Q5 = 1240 CFS	Q50 = 3620 CFS
CHW = 905.59 FT.	CHW = 908.10 FT.
V = 4.65 FPS	V = 7.20 FPS
Q10 = 1860 CFS	Q100 = 4520 CFS
CHW = 907.35 FT.	CHW = 908.56 FT.
V = 4.56 FPS	V = 7.24 FPS

Rdwy OT = 7  
Q OT = 07 = 1506 CFS  
OT ELEV = 906.43  
V OT = 4.6 FPS  
Natural CHW = 904.48